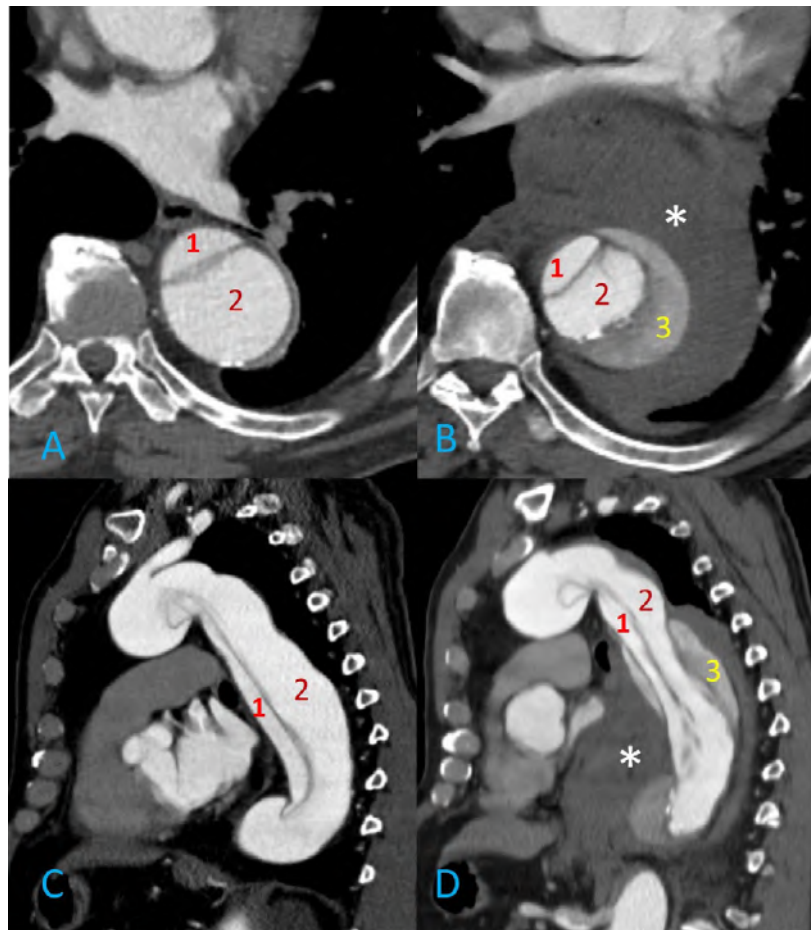


## Acute on chronic dissection – Three lumen aorta

Francisco R. Carvalho , Lourenço Resende , Sofia Alves 

Serviço de Imagiologia, Unidade Local de Saúde Gaia/Espinho, V.N. Gaia, Portugal

Submitted: January 20, 2026; Accepted: May 4, 2026



60-year-old man with a history of acute type A aortic dissection treated by ascending aorta replacement six years earlier. Subsequent imaging follow-up revealed a chronic distal thoracoabdominal aortic dissection with a persistent false lumen (A–D/2) and a smaller true lumen (A–D/1). He presented to the emergency department with acute thoracic pain. Urgent computed tomography demonstrated an acute-on-chronic thoracoabdominal aortic dissection with three distinct lumens, including a newly formed, externally located false lumen (A–D/3), complicated by rupture and a large mediastinal haematoma(\*). The patient underwent

emergent endovascular repair but died days later due to complications.

Acute-on-chronic dissection resulting in a triple-lumen aorta represents a highly unstable condition, associated with rapid aortic enlargement due to structural weakness of the outer false lumen wall and a high likelihood of requiring urgent intervention.

**Acknowledgements:** None

**Conflicts of interest:** None

**Funding:** None

Corresponding Author:

Francisco R. Carvalho | fr.carvalho46@gmail.com  
R. Conceição Fernandes s/n, 4434-502, Vila Nova de Gaia

Angiol Vasc Surg 2026;22(1):43  
DOI: <https://doi.org/10.48750/acv.714>

