

Inverted T bypass: a solution for distal revascularization in the absence of an adequate autologous vein graft.

Armanda Duarte , Tony R. Soares , Gonçalo Cabral , Tiago Costa , José Tiago , José Gimenez ,
Diogo Cunha e Sá 

Department of Angiology and Vascular Surgery, Hospital Beatriz Ângelo, Loures, Portugal.

Submitted: May 15, 2023; Reviewed: October 12, 2023; Accepted: October 27, 2023.

Presented at: 22nd Annual Meeting of the Portuguese Society of Angiology and Vascular Surgery, 2023

ABSTRACT

INTRODUCTION: Peripheral arterial disease has become a worldwide problem, with chronic limb-threatening ischemia (CLTI) being its most extreme manifestation. Recently, endovascular strategies evolved and became the first approach in many revascularization procedures. However, infrapopliteal (IP) disease is still a therapeutic challenge. This study aims to present a surgical technique, named inverted T bypass, that can be applied to patients with: an IP artery with poor collateralization to the foot, an infra-malleolar artery with poor runoff and availability of only a short venous graft.

METHODS: A single-center retrospective analysis of all patients submitted to inverted T bypass. The end points of the present study were limb-based patency (LBP), primary patency (PP) and secondary patency (SP) rates, freedom from CLTI, recurrence of CLTI, freedom from major index limb amputation, amputation free-survival, and overall survival.

RESULTS: A total of twenty-five patients with CLTI (68% male) with a median age of 77 years were submitted to 25 inverted T bypasses. The median follow-up was 25 months (interquartile range of 32). Twenty-one preoperative angiographies were performed. Severe femoropopliteal (FP) and IP anatomic patterns (GLASS FP and IP grade 4) were predominant (57% and 86%, respectively) with 100% of limbs classified as GLASS stage III. Three patients (12%) had previously failed endovascular treatment. LBP, PP and SP were, respectively, 75%, 75% and 79% at 1 year, and 61%, 61% and 64% at 2 years. After one year, 86% of the limbs were free from CLTI and 79% of them remained without recurrences during a follow-up of 2 years. Eighty-one percent of the patients were free from major index limb amputation at 2 years.

CONCLUSION: The inverted T bypass is a creative surgical solution for CLTI patients with poor runoff and lacking an adequate venous graft. The results are promising, rendering this technique a viable option for distal and ultra-distal revascularization in complex cases.

Keywords: Chronic Limb-Threatening Ischemia; Open revascularization; Infrapopliteal disease; Tibioperoneal disease; Peripheral arterial disease.



INTRODUCTION

Peripheral arterial disease (PAD) has become a major global health problem, affecting approximately 200 million individuals.¹ Chronic limb-threatening ischemia (CLTI) is the most extreme manifestation of PAD and affects up to 11% of this population.⁽²⁻⁴⁾

The recent evolution in the vascular field gave rise to different solutions for the treatment of CLTI. Endovascular therapy has been experiencing a remarkable expansion with minimally invasive tools and techniques for arterial revascularization. The phenotypic expression of CLTI has changed in the last decades with the advent of diabetes mellitus as a global epidemic, resulting in an increase in the prevalence of tibioperoneal disease pattern.⁽⁵⁻⁷⁾ Distal disease is a therapeutic challenge to any surgeon, particularly for endovascular techniques.

Patients with CLTI in the setting of tibioperoneal disease are typically categorized as non-revascularizable when they lack an autologous vein graft and endovascular treatment had failed (or was considered technically unfeasible).⁽⁸⁾ Some centers, like ours, have accumulated experience in tibioperoneal revascularization using prosthetic grafts as an alternative to a lacking autologous vein conduit.⁽⁸⁻¹⁰⁾ However, to achieve acceptable results in distal prosthetic revascularization the presence of at least one excellent runoff vessel is mandatory.

This study aims to present the results of a surgical technique named *inverted T bypass*⁽¹¹⁾ (firstly described as *bridge graft technique* by Deutsch et al⁽¹²⁾) which can be applied to patients with complex anatomic patterns and without an adequate autologous vein graft. This technique is useful for direct foot revascularization in situations that meet the following criteria:

- major ischemic foot wounds,
- an infrapopliteal artery with poor collateralization to the foot,
- an artery crossing the ankle/inframalleolar artery with poor run-off,
- a short venous graft with at least 3mm in diameter.

Briefly, an inverted T bypass consists in creating a bridge between both outflow arteries using a short venous graft that receives inflow from a heparinized prosthetic graft (figure 1). This bypass configuration distributes blood flow between the proximal and distal outflow arteries lowering run-off resistance, increasing prosthetic graft velocity and revascularizing two territories.

Figure 1. Schematic illustration of inverted T bypass, displaying a short venous bypass between the two outflow arteries (peroneal and anterior tibial arteries), receiving inflow (superficial femoral artery) from a prosthetic graft.



METHODS

Study population

All patients with CLTI submitted to inverted T bypass between February 2017 and December 2022 were included. A retrospective analysis was performed in a single center with a limb preservation program. Baseline demographic and clinical characteristics, perioperative details and follow-up data were collected from medical records. All patients provided informed consent before surgery. The Institutional Review Board approval was waived for this study.

Classification systems

Wound and infection grade from the Society for Vascular Surgery Wifl staging system was determined to classify all wounds.⁽¹³⁾ Segmental femoropopliteal (FP) and infrapopliteal (IP) grades were determined from preoperative angiograms and reviewed by one of the authors. GLASS stage was determined combining FP and IP grades according to the literature.⁽²⁾

Preoperative approach

All patients were assessed according to the departmental protocol for CLTI. The vascular team performed a clinical evaluation including a dedicated duplex ultrasound to assess anatomic pattern, to preview the most plausible inflow and outflow vessels, and to evaluate the presence of an adequate venous graft. Preoperative angiography was performed to evaluate the extension of the disease (stratified by GLASS classification), to determine the most appropriate inflow and outflow vessels and to estimate the quality of the runoff. The patients that had no other possible solution, endovascular or conventional distal revascularization, and met the above-mentioned criteria were proposed for inverted T bypass.

Technique

Duplex ultrasound was performed on the day of the surgery to map and mark the vein segment and the outflow vessels. The vein was harvested first, to ensure the presence of an adequate graft. Inflow and outflow vessels were carefully dissected, preserving relevant collaterals. Anatomical tunneling was performed. Intravenous non-fractionated heparin was administered. Both distal anastomoses were performed without clamps using an Esmarch bandage. The first anastomosis was performed between the most distal outflow artery and the inverted venous graft. The second anastomosis was performed between the proximal outflow artery (most often the peroneal artery) and the opposite end of the venous graft. Afterwards, a termino-lateral prosthetic-venous anastomosis was performed close to the distal end of the vein graft (i.e., closer to the second anastomosis) to avoid the action of venous valves (figure 2). In our center the prosthetic graft used was a 6-mm heparin-bonded expanded polytetrafluoroethylene graft (Propaten®, W.L. Gore & Associates, Flagstaff, AZ). After completion of the prosthetic-venous anastomosis, the Esmarch bandage was removed. The final anastomosis was performed between the prosthetic graft and the inflow vessel (usually the femoral artery). All bypasses were controlled with intraoperative angiography.

Figure 2. Preoperative angiography (left) and postoperative angiography of an inverted T bypass (right). An inverted vein graft was connected between the peroneal and anterior tibial arteries and a prosthetic graft was anastomosed to the inverted vein graft closer to the peroneal artery.



Postoperative care

All patients initiated a protocol of a full dose anticoagulant therapy (warfarin with a target of INR 2.5 – 3.5 or, in non-compliant patients, direct oral anticoagulant) and lipid-lowering medication, the latter preferably initiated at least

1 week before surgery. Graft surveillance was performed at 1, 3, and 6 months after the procedure and every 6 months thereafter, consisting in physical examination and duplex ultrasound. Patients who failed to heal or with *de novo* signs of CLTI were promptly evaluated by duplex ultrasound and, if required, submitted to angiography and reintervention.

Clinical end points and variable definitions

The end points of the present study were limb-based patency (LBP), primary patency (PP) and secondary patency (SP) rates, freedom from CLTI, recurrence of CLTI, freedom from major limb amputation (or limb salvage), amputation free-survival (AFS), and overall survival. LBP was considered lost if anatomic failure (occlusion, critical stenosis, or any reintervention on the target artery path), or hemodynamic failure (clinical symptoms of CLTI in the index limb with significant stenosis on the target artery path). AFS was defined as patients alive without above ankle amputation of the index limb. Freedom from CLTI was achieved if AFS with complete wound healing and no ischemic rest pain was obtained within a period of 12 months. Recurrence of CLTI included all patients that achieved freedom from CLTI but developed a new wound or ischemic rest pain during the follow-up (as such, patients submitted to major amputation of the index limb during this period were considered a recurrence of CLTI).^[4] Chronic kidney disease was defined as an estimated glomerular filtration rate of less than 60 mL/min/1.73m² determined with the Chronic Kidney Disease Epidemiology Collaboration (CKD-EPI).^[5]

Statistical analysis

Statistical analysis was carried out using Stata 12.1 (StataCorp®, Lakeway Drive, College Station, Texas, USA). Continuous variables were presented as median with interquartile range from 25th to 75th percentile (IQR), and categorical variables were presented as absolute numbers with percentage values. Time-to-event end points were presented with Kaplan–Meier estimates with patients censored at major amputation, death, or last follow-up. All analyses were considered statistically significant if a two-tailed p value < .05 was observed.

RESULTS

A total of 25 patients with CLTI were submitted to 25 inverted T bypasses. The majority of the patients were male (68%), with a median age of 77 years (IQR 17). Patients' characteristics and clinical data are summarized in Table I. Twenty-four patients (96%) had hypertension, 72% had diabetes, 20% had history of smoking and 20% presented with end-stage kidney disease requiring dialysis. Four patients with an estimated glomerular filtration rate of less than 30 mL/min/1.73m² (and not under dialysis) were not evaluated by preoperative angiography. Severe femoropopliteal and infrapopliteal anatomic patterns (GLASS FP and IP grade 4) were predominant, with rates of 57% (n=12) and 86% (n=18), respectively (see Table II). All limbs evaluated from preoperative angiographies (n=21) had GLASS stage III. Three patients (12%) had previously failed endovascular treatment.

Table I. Clinical characteristics of patients submitted to revascularization using inverted T bypass operations.

Male gender – N (%)	17 (68%)
Age, years (SD)	77 (17)
BMI, kg/m ² (SD)	24 (4)
Current smoker – N (%)	2 (8%)
Former smoker – N (%)	3 (12%)
History of smoking – N (%)	5 (20%)
Hypertension – N (%)	24 (96%)
Diabetes – N (%)	18 (72%)
CAD – N (%)	10 (40%)
CKD (eGFR<60 mL/min/1.73m ²) – N (%)	13 (52%)
ESRD requiring dialysis – N (%)	5 (20%)
Wound class (WIFI) – N (%)	
0	2 (8%)
1	7 (28%)
2	13 (52%)
3	3 (12%)
Foot infection class (WIFI) – N (%)	
0	17 (68%)
1	4 (16%)
2	4 (16%)
3	0 (0%)
Statin – N (%)	13 (52%)
Antiplatelet – N (%)	14 (56%)

SD Standard Deviation; **BMI** Body mass index; **CAD** coronary artery disease; **CKD** Chronic Kidney Disease; **ESRD** End-Stage Renal Disease; **WIFI** Wound, Ischemia, and foot Infection Classification

Table II. GLASS distribution determined from the 21 preoperative angiographies of patients submitted to revascularization using inverted T bypass operations.

GLASS FP	N (%)
Grade 0	3 (14%)
Grade 1	3 (14%)
Grade 2	1 (5%)
Grade 3	2 (10%)
Grade 4	12 (57%)
GLASS IP	N (%)
Grade 0	0 (0%)
Grade 1	0 (0%)
Grade 2	1 (5%)
Grade 3	2 (10%)
Grade 4	18 (86%)
GLASS Stages	N (%)
Stage I	0 (0%)
Stage II	0 (0%)
Stage III	21 (100%)

FP Femoro-popliteal; **IP** Infra-popliteal.

The peroneal artery was the most common proximal outflow vessel, targeted in 64% of the cases (n=16). Twenty-two (88%) inverted T bypasses obtained inflow from above the knee. Operative details are summarized in Table III.

Table III. Operative details of patients submitted to revascularization using inverted T bypass.

	N (%)
Inflow	
Iliac sector	2 (8%)
Femoro-popliteal above the knee	20 (80%)
Popliteal below the knee	3 (12%)
Outflow	
Popliteal/peroneal	1 (4%)
Peroneal/anterior tibial	4 (16%)
Peroneal/posterior tibial	4 (16%)
Peroneal/ dorsalis pedis	6 (24%)
Peroneal/perforating branch	1 (4%)
Peroneal/plantar	1 (4%)
Anterior tibial/anterior tibial	1 (4%)
Anterior tibial/dorsalis pedis	1 (4%)
Posterior tibial/anterior tibial	2 (8%)
Posterior tibial/plantar	2 (8%)
Dorsalis pedis/plantar	2 (8%)
Conduit	
Great saphenous vein	23 (92%)
Small saphenous vein	2 (8%)

The median follow-up was 25 months (IQR 32). LBP and primary patency had identical rates at 1 and 2 years (75% and 61%, respectively). Secondary patency rates were 79% and 64% at 1 and 2 years, respectively. Patency rates are summarized in Table IV and presented by Kaplan–Meier curves in Figures 3A-C. During follow-up, one early occlusion (< 30 days) was observed, from a total of nine. Four patients were reintervened, with one early occlusion. The remaining 3 reinterventions occluded at 5, 8 and 13 months.

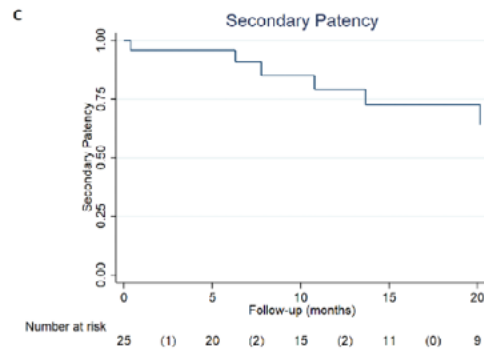
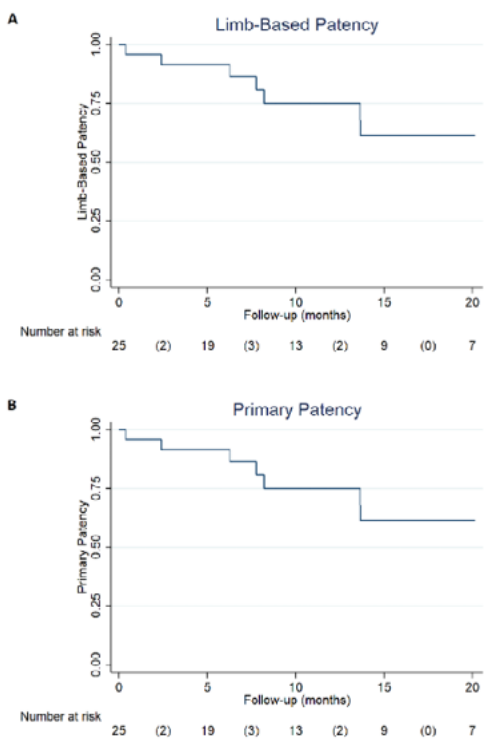
At 1 year, 86% of the limbs were free from CLTI (Figure 4A), and 79% of them remained without recurrences at 2 years (Figure 4B). During follow-up, 8 (32%) patients were submitted to major amputation, granting a 2-year freedom from major amputation of 81% (Figure 5). The overall survival was 71% at 2 years. All limb-specific and survival-related end points are summarized in Table IV.

Table IV. Bypass-related and clinical outcomes

Limb-based patency - 1 year	75%
Limb-based patency - 2 years	61%
Primary patency - 1 year	75%
Primary patency - 2 years	61%
Secondary patency - 1 year	79%
Secondary patency - 2 years	64%
Freedom from CLTI - 6 months	43%
Freedom from CLTI - 12 months	86%
Recurrence of CLTI - 1 year†	21%
Recurrence of CLTI - 2 years†	21%
Freedom from major index limb amputation - 1 year	81%
Freedom from major index limb amputation - 2 years	81%
Overall survival - 1 year	81%
Overall survival - 2 years	71%
Amputation-free survival - 1 year	66%
Amputation-free survival - 2 years	57%

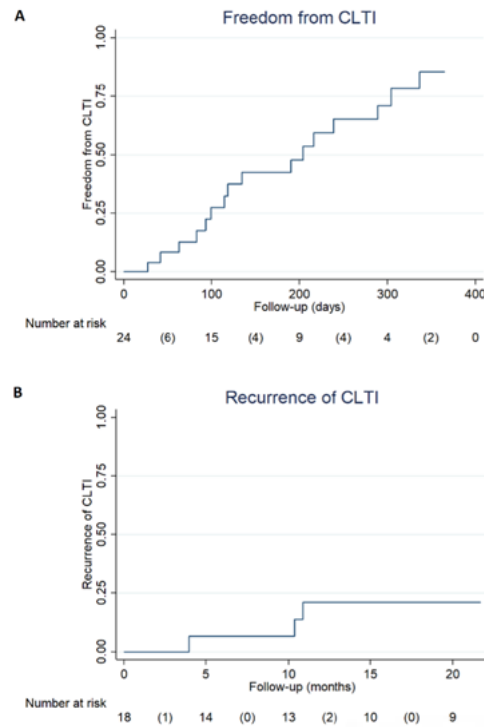
CLTI Chronic limb threatening ischaemia. † Total of 17 cases, that is the total number of cases that was previously free from CLTI.

Figure 3. Kaplan-Meier curves depicting patency rates of inverted T bypass



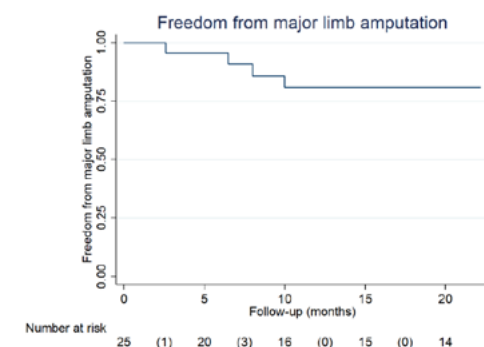
A - Limb-based patency (LBP); **B** - Primary patency; **C** - Secondary patency.

Figure 4. Kaplan-Meier curves depicting limb-specific end points of inverted T bypass.



A - Freedom from CLTI; **B** - Recurrence CLTI.

Figure 5. Kaplan-Meier curves depicting freedom from major amputation after inverted T bypass.



DISCUSSION

Open revascularization remains an important tool in modern vascular surgery. Global Vascular Guidelines recommend bypass surgery in patients with severe anatomic and clinical presentations (GLASS stage III and Wifl stage 3 or 4) when an adequate autologous vein is available.^[2] In these setting, endovascular intervention is considered the best alternative when venous graft is unavailable.^[2]

The two most important limitations for bypass patency are inadequate autologous vein and poor outflow.^[2] Nevertheless, the absence of a good-quality venous graft is not an absolute contraindication for open surgery. Indeed, the results of the BEST-CLI trial, suggested that bypasses without a great saphenous vein graft appeared to achieve comparable outcomes to those of an endovascular intervention.^[4] Accordingly, several centers, including ours, have been accumulating extensive experience with prosthetic conduits, as an alternative to autologous vein, especially in the presence of good outflow.^[8,10,16]

Inverted T bypass was performed for the first time in a complex multilevel occlusive disease case without a suitable vein and with two poor outflow vessels. To optimize the outflow the authors (DCS and GC) envisioned a short venous bypass between both outflow arteries. The premise is that two run-off vessels decrease peripheral arterial resistance and increase the ingraft flow velocity which, theoretically, optimizes the patency of the revascularization.^[11]

Our results proved to be very promising considering the extreme cases presented: severe anatomic disease (100% GLASS III stage), absence of a full-length autologous vein and poor outflow vessels. Global Vascular Guidelines estimated a 1-year LBP <50% in patients categorized with GLASS III stage.^[2] We obtained LBP, primary and secondary patency rates of 61%, 61% and 74% at 2 years, respectively, which highlight the value of this technique. Additionally, most limbs were free from CLTI at 1 year (86%) and free from recurrence at 2 years (79%), granting a 2-year freedom from major amputation of 81%. These results seem to be comparable with a recent systematic review and meta-analysis of distal venous bypass that revealed 2-year PP, SP, and limb salvage of 78%, 87% and 83%, respectively.^[17] Another meta-analysis, focused on popliteal-to-distal vein bypass grafts, revealed 2 year-estimates of PP, SP, and foot preservation of 77%, 82% and 85%, respectively.^[18] As previously discussed, guidelines suggest endovascular approach in the absence of an adequate autologous vein graft. However, the current state of evidence is particularly limited regarding infrapopliteal angioplasty for the treatment of CLTI. A meta-analysis of distal angioplasty for CLTI showed 2-year PP, SP, and limb salvage rates of 51%, 64% and 84%, respectively.^[19] However, these results are lacking from studies with long-segment lesions. The few publications about limbs with long lesions (classified as TASC D) and submitted to infrapopliteal angioplasty presented modest results with 1-year PP rates of 37 - 48%.^[20,21]

Inverted T bypass seems to be at least comparable to these different techniques of infrapopliteal revascularization. However, we must emphasize the anatomic complexity of our sample: (1) extensive occlusive disease with 100% of the

cases categorized as GLASS III stage, (2) poor outflow vessels, and (3) no viable/failed endovascular solution. The inverted T bypass technique reserves the best conduit available for the most challenging territory - the tibioperoneal arteries.

The technical difficulties when performing an inverted T bypass are the same as in any distal bypass in patients with complex anatomic patterns and extensive calcified lesions. However, procedure duration is longer because it involves performing four anastomoses. This fact emphasizes the need for careful dissection and minimal blood loss, to reduce peri-procedure complications in these frail patients.

In conclusion, inverted T bypass is a creative surgical solution for the treatment of CLTI in patients with complex multilevel infrainguinal occlusive disease. The results are promising, rendering this technique a viable option for distal and ultra-distal revascularization in complex cases.

Acknowledgements: None

Conflicts of interest: None

Funding: None

REFERENCES

- Menard MT, Rosenfield K, Farber A. The BEST-CLI Trial: Implications of the Primary Results. *European Journal of Vascular and Endovascular Surgery* 2023;317-9. Doi: 10.1016/j.ejvs.2022.12.032.
- Conte MS, Bradbury AW, Kolh P, White J V., Dick F, Fitridge R, et al. Global Vascular Guidelines on the Management of Chronic Limb-Threatening Ischemia. *European Journal of Vascular and Endovascular Surgery* 2019;58(1):S1-S109.e33. Doi: 10.1016/j.ejvs.2019.05.006.
- Sidawy AP, Perler BA. *Rutherford's Vascular Surgery and Endovascular Therapy*. vol. 2. 10th ed. Elsevier; 2023.
- Farber A, Menard MT, Conte MS, Kaufman JA, Powell RJ, Choudhry NK, et al. Surgery or Endovascular Therapy for Chronic Limb-Threatening Ischemia. *New England Journal of Medicine* 2022;387(25):2305-16. Doi: 10.1056/nejmoa2207899.
- Zhou B, Lu Y, Hajifathalian K, Bentham J, di Cesare M, Danaei G, et al. Worldwide trends in diabetes since 1980: a pooled analysis of 751 population-based studies with 4.4 million participants. *The Lancet* 2016;387(10027):1513-30. Doi: 10.1016/S0140-6736(16)00618-8.
- Graziani L, Silvestro A, Bertone V, Manara E, Andreini R, Sigala A, et al. Vascular Involvement in Diabetic Subjects with Ischemic Foot Ulcer: A New Morphologic Categorization of Disease Severity. *European Journal of Vascular and Endovascular Surgery* 2007;33(4):453-60. Doi: 10.1016/j.ejvs.2006.11.022.
- Diehm N, Shang A, Silvestro A, Do D-D, Dick F, Schmidli J, et al. Association of Cardiovascular Risk Factors with Pattern of Lower Limb Atherosclerosis in 2659 Patients Undergoing Angioplasty. *European Journal of Vascular and Endovascular Surgery* 2006;31(1):59-63. Doi: 10.1016/j.ejvs.2005.09.006.
- Lauterbach SR, Torres GA, Andros G, Oblath RW. Infragenicular Polytetrafluoroethylene Bypass With Distal Vein Cuffs for Limb Salvage A Contemporary Series. vol. 140. 2005.
- Kreienberg PB, Darling RC, Chang BB, Paty PSK, Lloyd WE, Shah DM. Adjunctive techniques to improve patency of distal prosthetic bypass grafts: Polytetrafluoroethylene with remote arteriovenous fistulae versus vein cuffs. *J Vasc Surg* 2000;31(4):696-701. Doi: 10.1067/mva.2000.104597.
- Neville RF, Lidsky M, Capone A, Babrowicz J, Rahbar R, Sidawy AN. An Expanded Series of Distal Bypass Using the Distal Vein Patch Technique to Improve Prosthetic Graft Performance in Critical Limb Ischemia. *European Journal of Vascular and Endovascular Surgery* 2012;44(2):177-82. Doi: 10.1016/j.ejvs.2012.04.014.
- Soares TR, Cabral G, Costa T, Tiago J, Gimenez J, Cunha e Sá D. Inverted T Bypass: A Solution for Distal Revascularisation in the Absence of an Adequate Autologous Vein Graft. *European Journal of Vascular and Endovascular Surgery* 2022;427-8. Doi: 10.1016/j.ejvs.2022.05.040.
- Deutsch M, Meinhart J, Howanietz N, Fröschl A, Heine B, Moidl R, et al. The bridge graft: a new concept for infrapopliteal surgery. *Eur J Vasc Endovasc Surg* 2001;21(6):508-12. Doi: 10.1053/ejvs.2001.1361.

- 13.** Mills JL, Conte MS, Armstrong DG, Pomposelli FB, Schanzer A, Sidawy AN, et al. The society for vascular surgery lower extremity threatened limb classification system: Risk stratification based on Wound, Ischemia, and foot Infection (WIFI). *J Vasc Surg* 2014;59(1):220--234.e2. Doi: 10.1016/j.jvs.2013.08.003.
- 14.** Soares TR, Cabral G, Costa T, Tiago J, Gimenez J, Duarte A, et al. Heparin-Bonded Expanded Polytetrafluoroethylene Is a Solution for Infrapopliteal Revascularization in the Absence of an Adequate Autologous Vein Graft. *Ann Vasc Surg* 2023. Doi: 10.1016/j.avsg.2023.06.015.
- 15.** Levey AS, Stevens LA, Schmid CH, Zhang YL, Castro AF, Feldman HI, et al. A new equation to estimate glomerular filtration rate. *Ann Intern Med* 2009;150(9):604–12. Doi: 10.7326/0003-4819-150-9-200905050-00006.
- 16.** Dorigo W, Pulli R, Castelli P, Dorrucchi V, Ferilli F, de Blasis G, et al. A multicenter comparison between autologous saphenous vein and heparin-bonded expanded polytetrafluoroethylene (ePTFE) graft in the treatment of critical limb ischemia in diabetics. *J Vasc Surg* 2011;54(5):1332–8. Doi: 10.1016/j.jvs.2011.05.046.
- 17.** Almasri J, Adusumalli J, Asi N, Lakis S, Alsawas M, Prokop LJ, et al. A systematic review and meta-analysis of revascularization outcomes of infrainguinal chronic limb-threatening ischemia. *European Journal of Vascular and Endovascular Surgery* 2019;58(1):S110–9. Doi: 10.1016/j.ejvs.2019.04.013.
- 18.** Albers M, Romiti M, Brochado-Neto FC, de Luccia N, Pereira CAB. Meta-analysis of popliteal-to-distal vein bypass grafts for critical ischemia. *J Vasc Surg* 2006;43(3):498-503.e2. Doi: 10.1016/j.jvs.2005.11.025.
- 19.** Romiti M, Albers M, Brochado-Neto FC, Durazzo AES, Pereira CAB, de Luccia N. Meta-analysis of infrapopliteal angioplasty for chronic critical limb ischemia. *J Vasc Surg* 2008;47(5):20–2. Doi: 10.1016/j.jvs.2008.01.005.
- 20.** Lo RC, Darling J, Bensley RP, Giles KA, Dahlberg SE, Hamdan AD, et al. Outcomes following infrapopliteal angioplasty for critical limb ischemia. *J Vasc Surg* 2013;57(6):1455–64. Doi: 10.1016/j.jvs.2012.10.109.
- 21.** Giles KA, Pomposelli FB, Hamdan AD, Blattman SB, Panossian H, Schermerhorn ML. Infrapopliteal angioplasty for critical limb ischemia: Relation of TransAtlantic InterSociety Consensus class to outcome in 176 limbs. *J Vasc Surg* 2008;48(1):128–36. Doi: 10.1016/j.jvs.2008.02.027.